



Benetti 108 Tradition Supreme

M/Y VARVARA

YEAR

2017

LENGTH

32.98 m

BENETTI 108 TRADITION SUPREME

YEAR

LENGTH

VAT PAID | FLAG - MALTA

M/Y VARVARA

2017

32.98 m

9 500 000 €

MY Benetti 108 Tradition Supreme Varvara, built in 2017 under the supervision of independent certified surveyor, boasts an impressive 2,300 nautical miles of cruising range and exterior design by the famous Stefano Righini. The yacht is RINA classified and has been operated by only one Owner and his family. European VAT paid.

The yacht received a unique neoclassical interior in restrained colors. Panoramic windows on the main deck flood the saloon with natural light, while lacquered wood surfaces combined with onyx create an amazing combination of restrained luxury and tranquil homeliness.

The entire bow of the main deck is dedicated to the Owner's suite, enlarged compared to other yachts in the Benetti 108 series. In addition to spacious bedrooms and bathrooms, there is an isolated office, a full-sized wardrobe and a personal laundry.

The yacht is equipped with an improved navigation system, an integrated audio-video equipment, light and climate control system powered by Crestron, in the garage you will find a Williams 445DJ tender, a Kawasaki jet ski, two seabobs, and a Yamaha stand-up jet ski in the bow.

Gross tonnage	210 t
Length overall	32.98 m
Beam overall	7.25 m
Draft	2.00 m
Material	GRP
Cabines	5
Engine hours	1061 m/h
Head compartments	5
Engine	2 x MAN V8 1000 hp
Fuel capacity	24740 l
Water capacity	3650 l
Max speed	13.50 knots
Cruising speed	12.00 knots

The company is not liable for validity of the information provided by the yacht-owner (images, specification of the yacht, list of equipment installed, its operability, engine hours, legal aspects). Actual engine hours are indicated at the moment of initial information placement and gets further periodically updated. Detailed information and characteristics will be provided on buyer's request and indicated in the contract.



Exterior Benetti 108 Tradition Supreme
M/Y "Varvara" 2017



Exterior Benetti 108 Tradition Supreme
M/Y "Varvara" 2017



Exterior Benetti 108 Tradition Supreme
M/Y "Varvara" 2017



Exterior Benetti 108 Tradition Supreme
M/Y "Varvara" 2017



Exterior Benetti 108 Tradition Supreme
M/Y "Varvara" 2017



Exterior Benetti 108 Tradition Supreme
M/Y "Varvara" 2017



Bow



Bow



Sundeck



Lounge areas on aft



Helm station in sundeck



Dining area and wetbar on sundeck



Dining area and wetbar on sundeck



Bar on aft sundeck



BBQ/Grill on sundeck



Sunbathing area on aft sundeck



Lounge area on aft upper deck



Lounge area on aft upper deck



Dining area on upper deck



Salon on upper deck



Salon on uper deck



Bar on upper deck



Cockpit on main deck



Cockpit on main deck



Salon on main deck



Salon on main deck



Salon on main deck



Dinette in salon on main deck



Main helm station



Galley



Stairs to upper deck



Stairs to lower deck



Owner's cabin on main deck



Owner's cabin on main deck



Owner's head



Owner's head



Guest VIP cabin on lower deck



Guest head



Guest VIP cabin on lower deck



Guest head



Guest cabin on starboard side



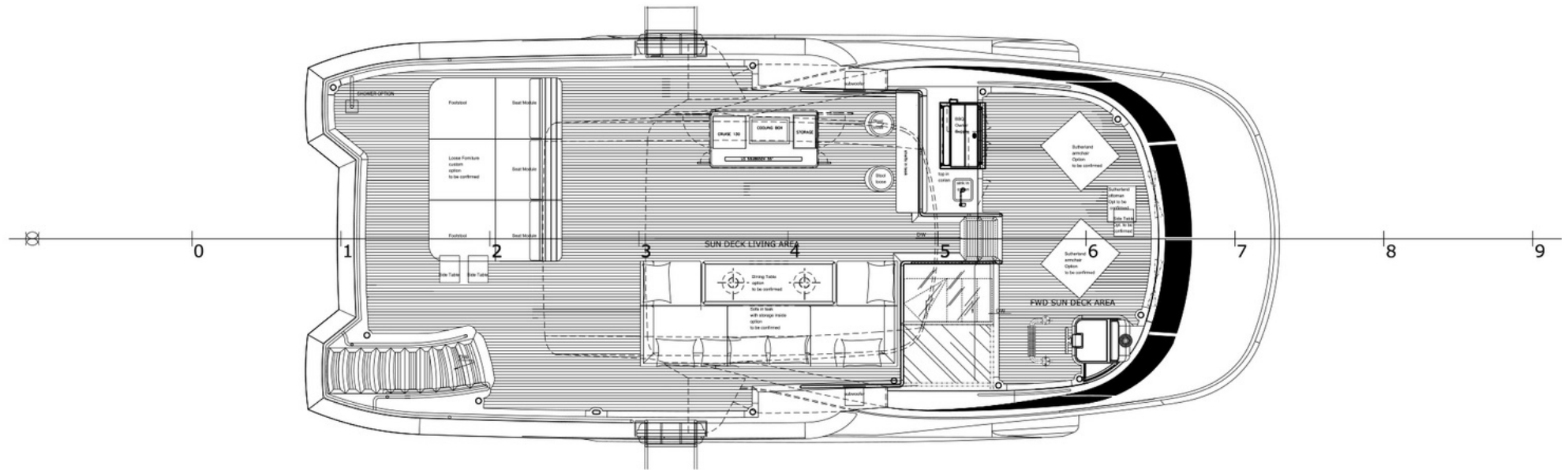
Guest head



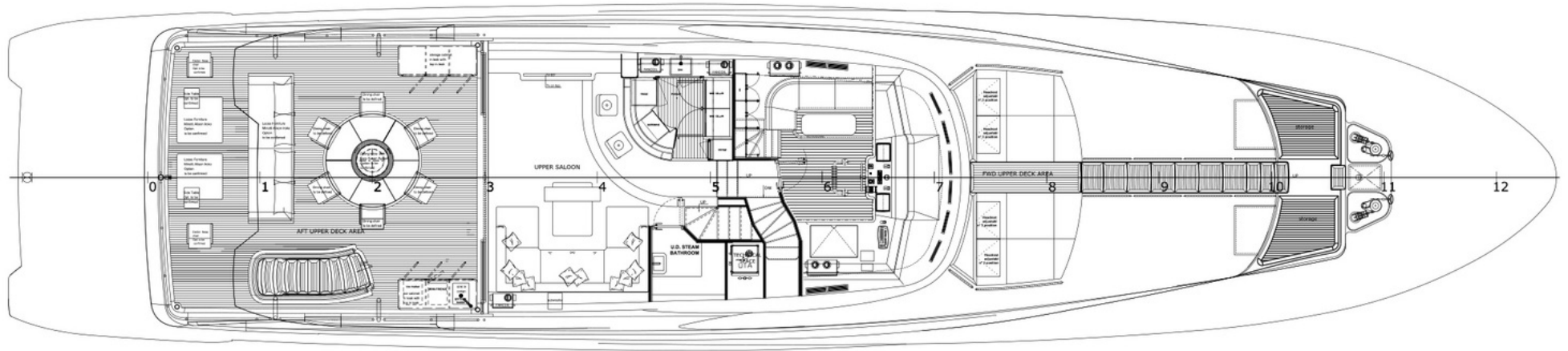
Guest cabin on port side



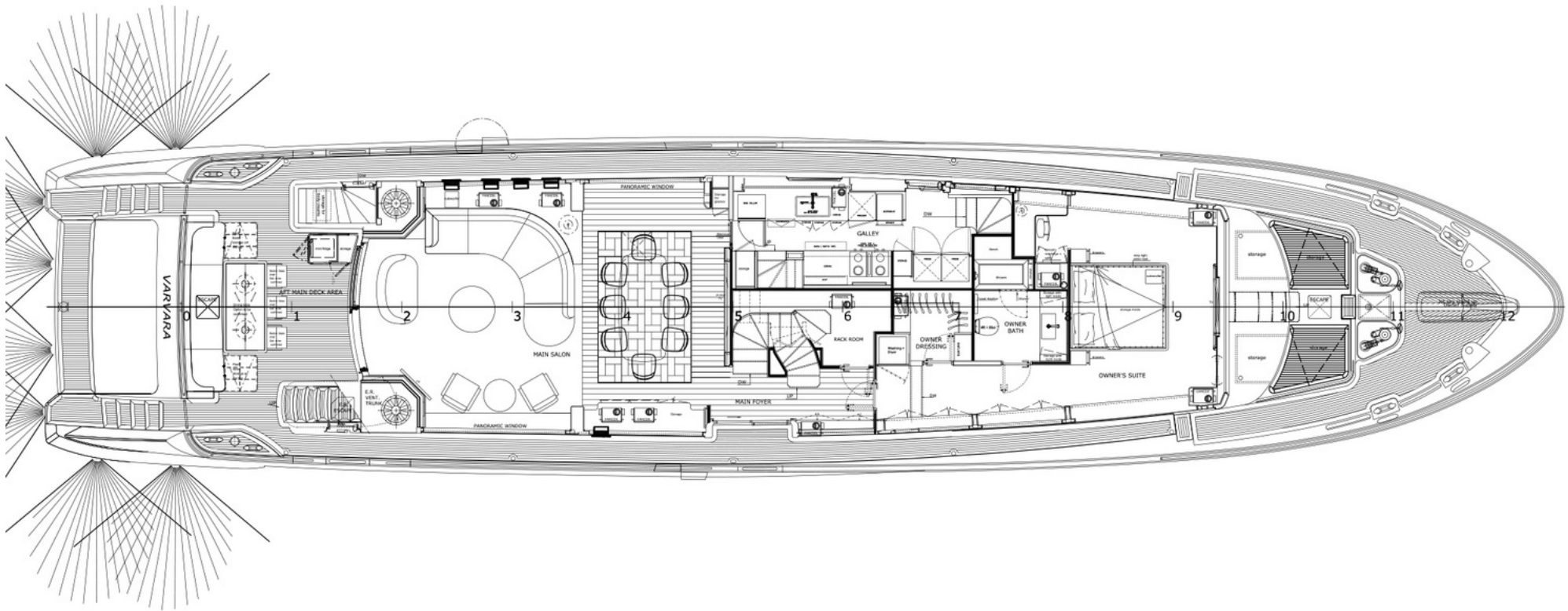
Sauna



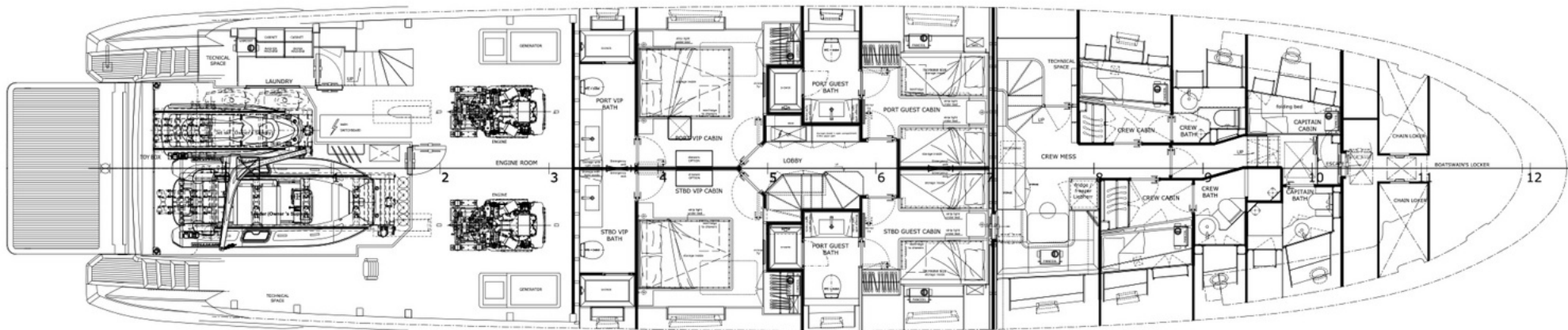
Sundeck



Upper deck



Main deck



Lower deck

BENETTI 108 TRADITION SUPREME

YEAR

LENGTH

VAT PAID | FLAG - MALTA

M/Y VARVARA

2017

32.98 m

9 500 000 €

SPECIFICATIONS

Gross tonnage	210 t	Length overall	32.98 m
Beam overall	0.00 m	Draft	2.00 m
Material	GRP	Passenger capacity	10
Berths	10	Cabines	5
Head compartments	5	Engine	2 x MAN V8 1000 hp
Fuel capacity	24740 l	Water capacity	3650 l
Max speed	13.50 knots	Cruising speed	12.00 knots
Engine hours	1061 m/h	Displacement	170.00 t
Interior designer	Benetti Yachts	Exterior styling & concept	Benetti Yachts

The company is not liable for validity of the information provided by the yacht-owner (images, specification of the yacht, list of equipment installed, its operability, engine hours, legal aspects). Actual engine hours are indicated at the moment of initial information placement and gets further periodically updated. Detailed information and characteristics will be provided on buyer's request and indicated in the contract.

BENETTI 108 TRADITION SUPREME

YEAR

LENGTH

VAT PAID | FLAG - MALTA

M/Y VARVARA

2017

32.98 m

9 500 000 €

EQUIPMENT

- Fully custom made interiors with use of marble and onyx
- Garage for Williams 445DJ + Kawasaki Jet Ski
- Two Sea Bob
- Hamam on UD longe
- Upgraded navigation system
- Fin stabilizers
- Crane on bow for Yamaha Super Jet
- Custom exterior loose furniture
- Gas bbq on Sun Deck
- Full custom Crestron Audio/Video pkg + domotic system

