



Lady Anastasia







## LADY ANASTASIA

Built by Sensation Yachts in 2001 and fully refitted in 2010 and 2018, LADY ANASTASIA has been inspired by musical themes and the love of her owner for Italian opera and classical music. The interior design is by the expert hand of Donald Starkey. This beautiful yacht should ideally be boarded through the side-boarding ladder so you enter directly into the elegantly impressive lobby, home to a beautiful staircase and the gracefully large, lavishly decorated master cabin. When you turn towards the forward section of the yacht to the formal dining area and when you turn towards the aft section of the yacht you'll have the main saloon. The lobby complements the style and elegance of the interior, and has had the best marble makers of the world construct the marble flooring, handpicked from the Carrara Mountains.

Walking up onto the main deck coming from the main saloon, the first thing you notice when stepping onto the aft deck is the sheer space on offer: very large, with a perfect configuration to seat 10 to 12 people comfortably in a vis-à-vis setting, nicely fitted out for sundowners or pre-diner cocktails overlooking the sea. This cosy seating area is ideal to read a book or to listen to Pavarotti singing Turandot's *Nessun Dorma*.

Going up the winding, enter the Bridge deck saloon which is also called the vista lounge. Two extremely large and powerful, Bowes & Wilkins speakers, adjacent to the centrally located large Loewe television immediately catches the eye, and ear of the guests. The large and comfortable area has a corner with a games table and a large bar area on starboard side and a large sofa on portside and whether you would like a quiet and relaxed atmosphere or turn the saloon into a karaoke bar, you can. This area holds the definition of a true multi-purpose area and adjusts to the requirements of the most discerning client. The Vista Deck (bridge deck aft) has a large oval dining table made of teak with precious wood inlays and is the perfect place to enjoy a breakfast overlooking the ever changing coastlines whilst cruising at a gentle ten knots, fully stabilised and with the quiet purr of the yacht's powerful engines, knowing she will take you to your destination in comfort and style. On the same deck, but forward to the bridge, and the best spot to overlook the sea whilst at anchor, this lovely round seating area is even sheltered from the wind when under way.

Returning to the main lobby, turning towards the forward section of the yacht and going through a small passageway, you will enter the master cabin, home to a study, a full width stateroom with a settee area to starboard, a walk-in closet and an extremely large bathroom with a his & hers vanity area. When returning to the lobby, and going one floor down towards the guest area, the forward part of the yacht accommodates two guest cabins that can be transformed into one large guest suite, by means of sliding doors, ideally for a family but also very practical should you require a nanny or a cabin for security personnel. The aft side guest cabins feature king size beds, a bath, adjacent bathroom facilities and ample storage for shoes, clothes and other luggage. They also have their own entertainment facilities. All guest cabins have their own theme and are named after opera Aria's: *un Bel di Vedremo*, *Celeste Aida*, *Nessun Dorma* and *O'mio bambino caro*.

Going up yet another deck, the LADY ANASTASIA's Sun deck does credit to her name, offering a vast areas to sunbathe, with sunbeds along a four person Jacuzzi, a service area under the radar arch, an outdoor cooking area with a grill, icemaker and fridges. The deck is large enough to hold a treadmill and a fitness bike. Finally, when the doors are open, a large bathing and seating area folds out onto the sea level, revealing the spacious garage where the jet skis, Seabob's, tenders, diving equipment and other water sports toys are kept.









*Lady Anastasia*

Kingstown  
The St. Vincent & Grenadines



# DECKS

























# INTERIORS































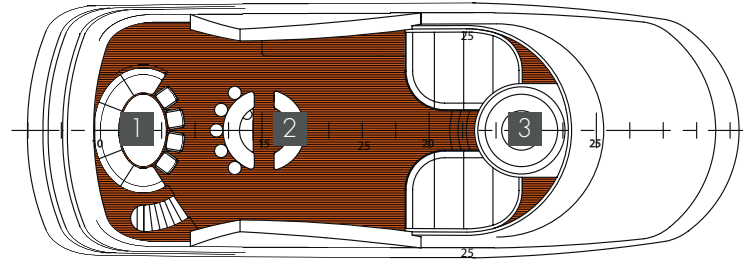




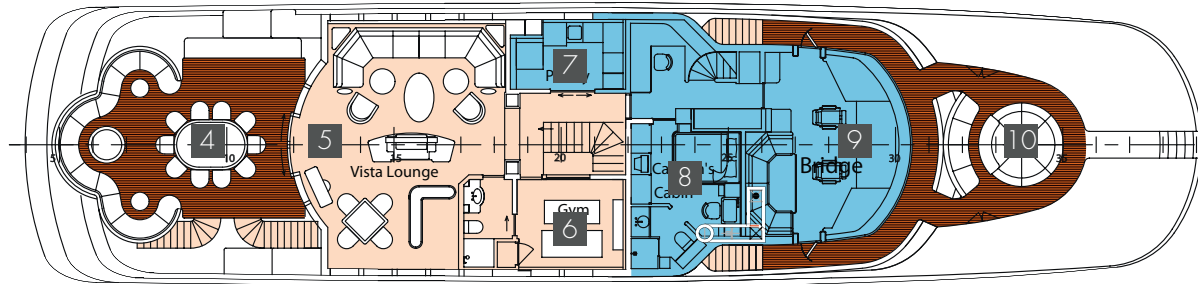


# TECHNICAL DETAILS

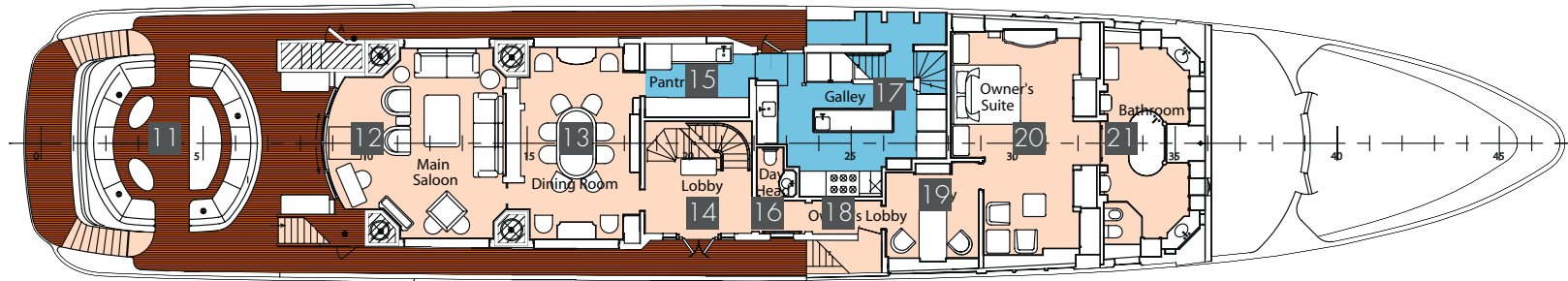
- 1 SUN DECK LOUNGE
- 2 BAR
- 3 JACUZZI
- 4 UPPER DECK AFT
- 5 UPPER DECK VISTA LOUNGE
- 6 GYM
- 7 UPPER DECK PANTRY
- 8 CAPTAIN'S CABIN
- 9 BRIDGE
- 10 FORE DECK LOUNGE
- 11 MAIN DECK AFT
- 12 MAIN DECK SALOON
- 13 MAIN DECK DINING ROOM
- 14 MAIN DECK LOBBY
- 15 MAIN DECK PANTRY
- 16 DAY HEAD
- 17 GALLEY
- 18 OWNER'S LOBBY
- 19 STUDY
- 20 OWNER'S SUITE
- 21 BATHROOM
- 22 LAZARETTE
- 23 ENGINE ROOM
- 24 GUEST SUITE 1
- 25 GUEST SUITE 2
- 26 GUEST SUITE 3
- 27 GUEST SUITE 4
- 28 LAUNDRY
- 29 CREW MESS
- 30 FRIDGE
- 31 CREW CABINS



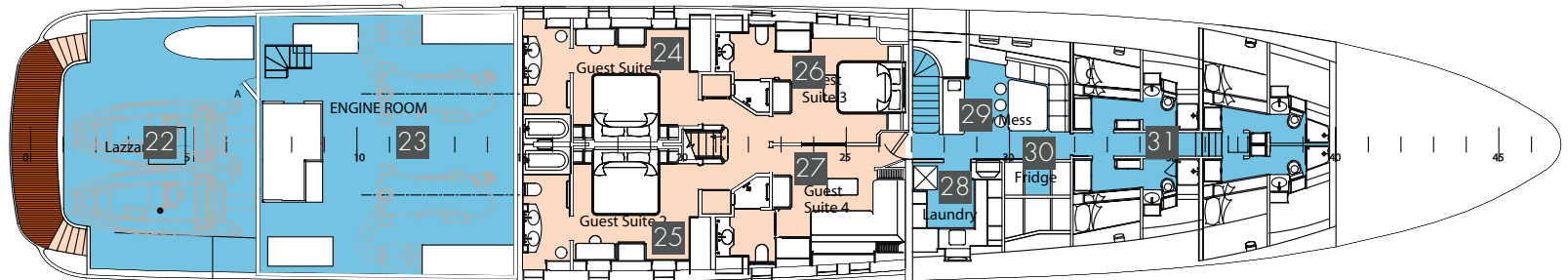
SUN DECK



UPPER DECK



MAIN DECK



LOWER DECK



# LADY ANASTASIA

Shipyard	Sensation Yachts, Auckland New Zealand
Model	Twin Screw Motor Yacht
Delivery Year	2001
Refits	2010 / 2018
Exterior Designer	Naval Architecture by Ray Harvey
Interior Designer	Donald Starkey.
Length overall	47.73m
Length waterline	40.44m
Beam	8.50m
Draft (full load)	2.20m
Construction	Full Aluminium
Displacement (GT, full load)	346.86 tons
Gross Tonnage (GT)	476 tons
Flag	St.Vincent & Grenadines / Kingstown
Guests (cruising)	10
Guests (sleeping)	10
Crew	9
Maximum Speed	18.2kn
Cruising Speed	12.5kn
Range (cruising speed)	2,860 nm at 12.5kn

Range (full speed)	1,380 nm at 18.2kn
Main engines	2 x Caterpillar DITA 3516 B 1,939 kW (2 x 2,600hp)
Generators	2 x 125 kW Northern Lights M6108 T2.1 1 with Kamatsu engines
Stabilisers	Quantum Controls QC-1200 Zero Speed Stabilizer System
Bow thruster	Naiad Marine Systems Model VT 75 (100hp)
Fuel capacity	78,000 litres
Fresh water capacity	10,000 litres
Classification	KM * Pleasure Yacht
Guest Accommodation	<ul style="list-style-type: none"><li>• 1 Master 4 Double</li></ul>
Tenders	<ul style="list-style-type: none"><li>• 1 x Williams Dieseljet 505 with Yanmar 110HP engine (LOA 5.05m) for 8 persons</li><li>• 1 x Williams Dieseljet 325 with Weber 750cc Turbo engine (LOA 3.3m) for 4 persons</li></ul>
Water Sports Equipment	<ul style="list-style-type: none"><li>• 1 x Jetski Seadoo GTX 260 LOA-3.5</li><li>• 2 x Seabob (1 x Cayago F7 and 1 x Cayago F5)</li></ul>
Communications	VISIPILEX (Wireless Time and Voice Controller, VS3200 Desktop Paging System, Keychain Transmitter FA 214)
Entertainment	<ul style="list-style-type: none"><li>• UniFi (WiFi system)</li><li>• Satellite TV Tracvision KVH Crestron HD 11</li><li>• Crestron audio system throughout the yacht</li></ul>

*The particulars are believed to be correct but are not guaranteed and may not be used for contractual purposes. - Specification provided for information only.*













