



***M/Y BENETTI 132 011***





## MAIN CHARACTERISTICS

Builder	Benetti	Max speed	15.5 knots
Length	40.24 m	Year of built	2019
Beam	8.18 m	Cabins	5
Draft	2.23 m	Price	18,000,000 EUR (VAT excl.)

NAVIATOR GROUP  
Anatoly Skippari  
+358 40 50 20080  
anatoly.naviator.fi





**M/Y BENETTI 132 011**





**M/Y BENETTI 132 011**



***M/Y BENETTI 132 011***





**M/Y BENETTI 132 011**



***M/Y BENETTI 132 011***



***M/Y BENETTI 132 011***





***M/Y BENETTI 132 011***



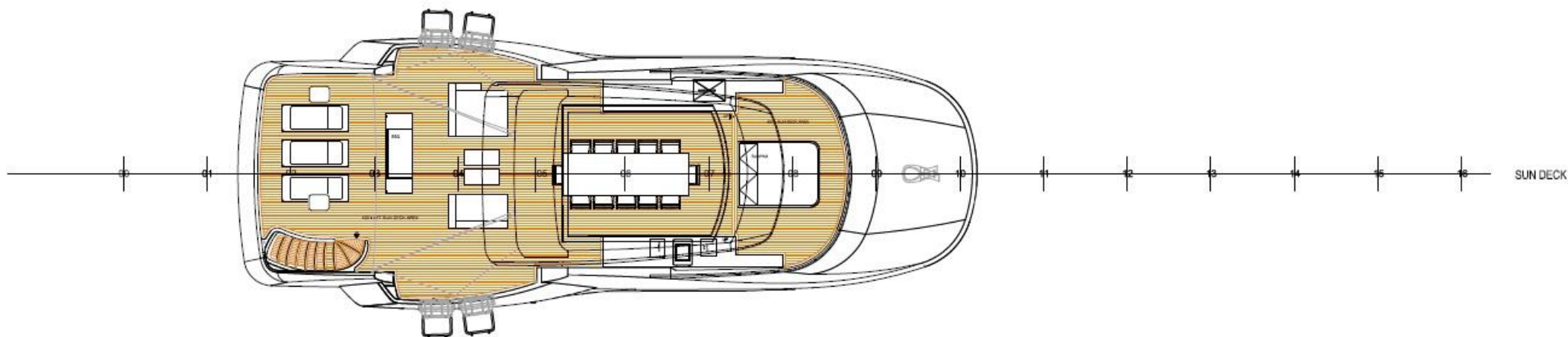
**M/Y BENETTI 132 011**



# SPECIFICATION

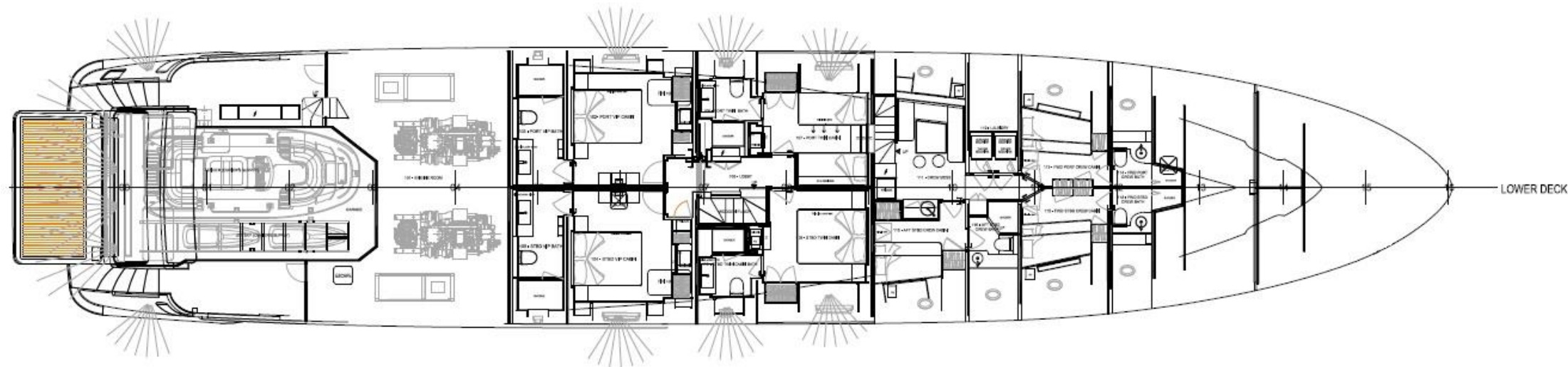
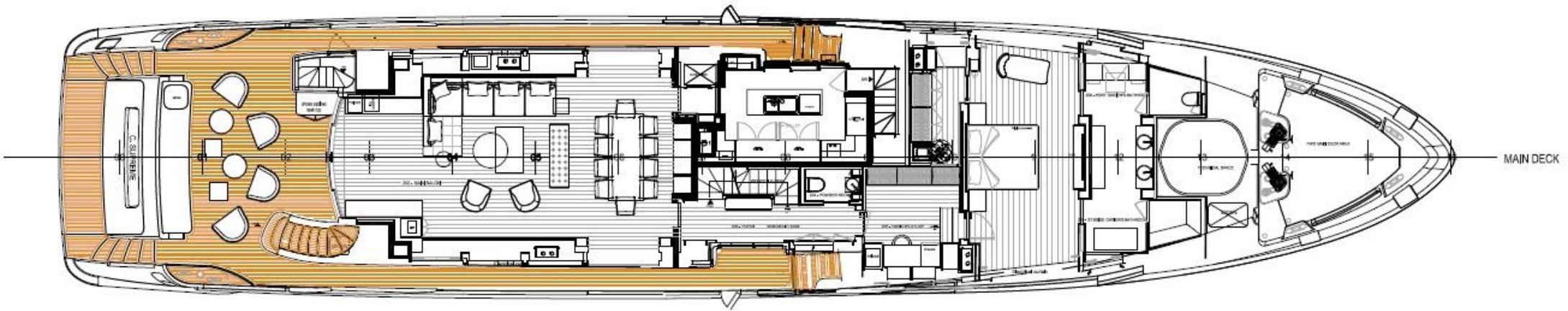
Builder	Bennetti	Engine	2 x MTU 1,450 hp
Year of built	2019	Engine model	12V 2000 M72
Length	40.24 m/131'10"	Fuel	Diesel
Beam	8.18 m/26'10"	Propulsion	2 x 5-blade prop shaft
Draft	2.23 m/7'3"	Gearbox	2 x ZF3351
Cabins	5 cabins for 10 guests	Stabilizer	Naiad zero speed
Hull material	FRP	Generator	2 x 80EFODZ Kohler 80 kW
Gross tonnage	322 t	Anchor	2 x 225kg
Displacement	275 t	Windlasses	2 x 380v 3- phase
Exterior Designer	Stefano Righini Design	Mooring stuff	2 stern winches
Naval Architect	Benetti	Bow thruster	60 kW hydraulic
Interior Design	Francois Zuretti	Watermaker	7,100 l/day
Speed	14/15.5 knots	Passerelle	
Range	3500 nm at 12 kn.	Garage for tender and toys	
Fuel capacity	45,000 l (11,887 US gall.)		
Water capacity	7,200 l (1,902 US gall.)		
Fuel consumption	270 l/h at 12 kn.		

**M/Y BENETTI 132 011**



**M/Y BENETTI 132 011**





# M/Y BENETTI 132 011