



M/Y "VIATORIS"

NAVIATOR GROUP
Anatoly Skippari
+358 40 50 200 80
anatoly@naviator.fi



MAIN CHARACTERISTICS

Builder	Conrad	Max. speed	13 knots
Length	40 m	Year of build	2018
Beam	8.3 m	Cabins	5
Draft	2.65 m	Price	18,500,000 EUR



M/Y "VIATORIS"



M/Y "VIATORIS"



M/Y "VIATORIS"



M/Y "VIATORIS"



M/Y "VIATORIS"



M/Y "VIATORIS"



M/Y "VIATORIS"



M/Y "VIATORIS"



M/Y "VIATORIS"



M/Y "VIATORIS"



M/Y "VIATORIS"

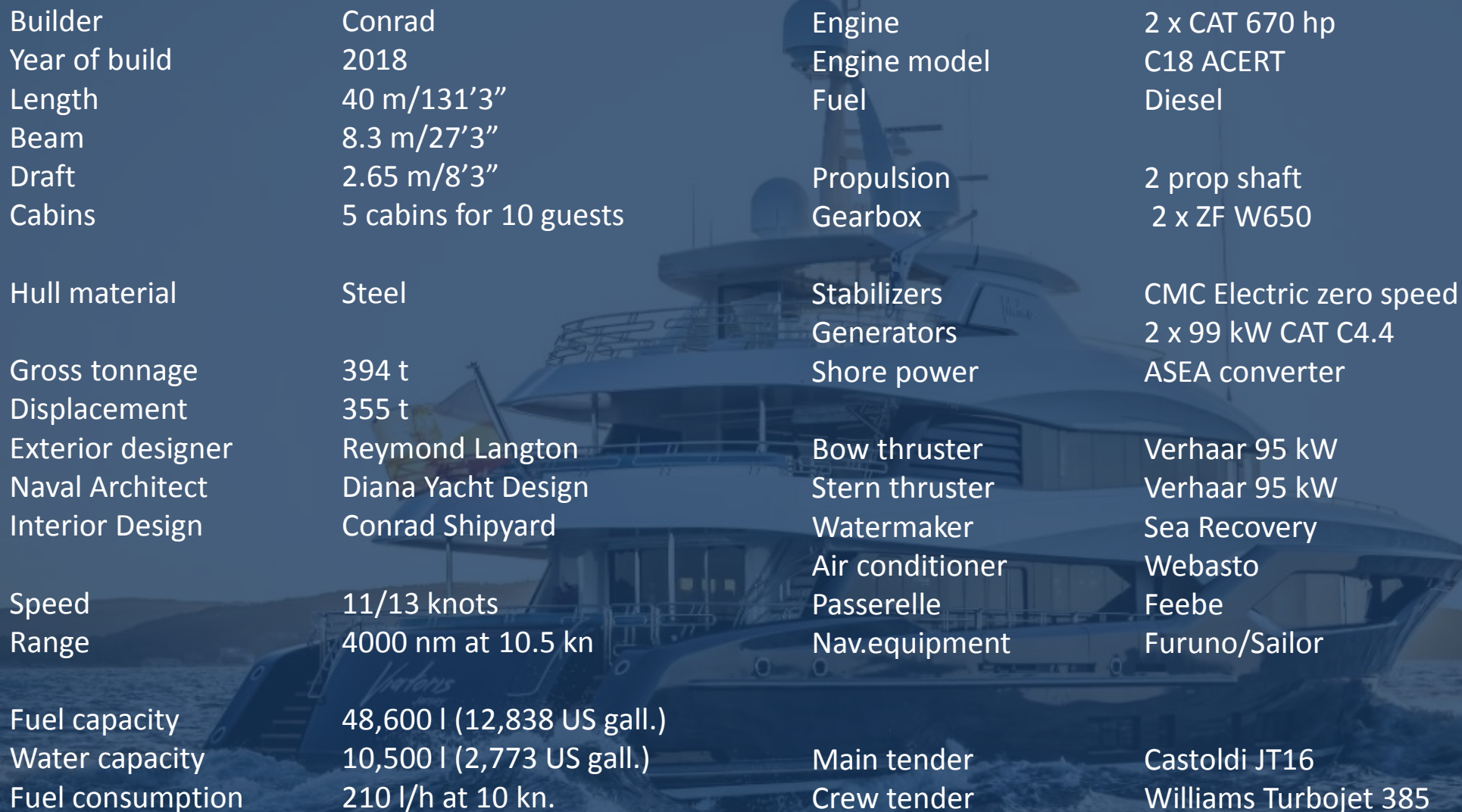


M/Y "VIATORIS"



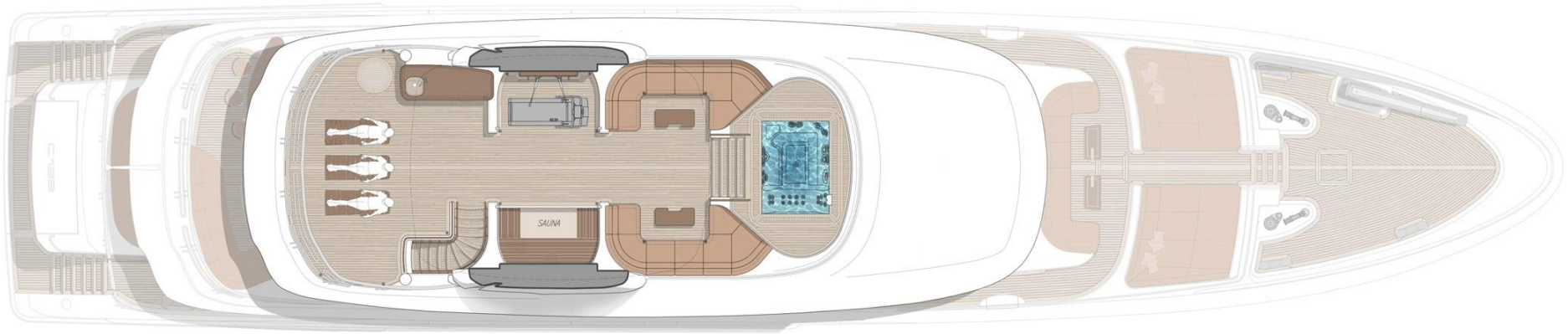
MY "VIATORIS"

SPECIFICATION

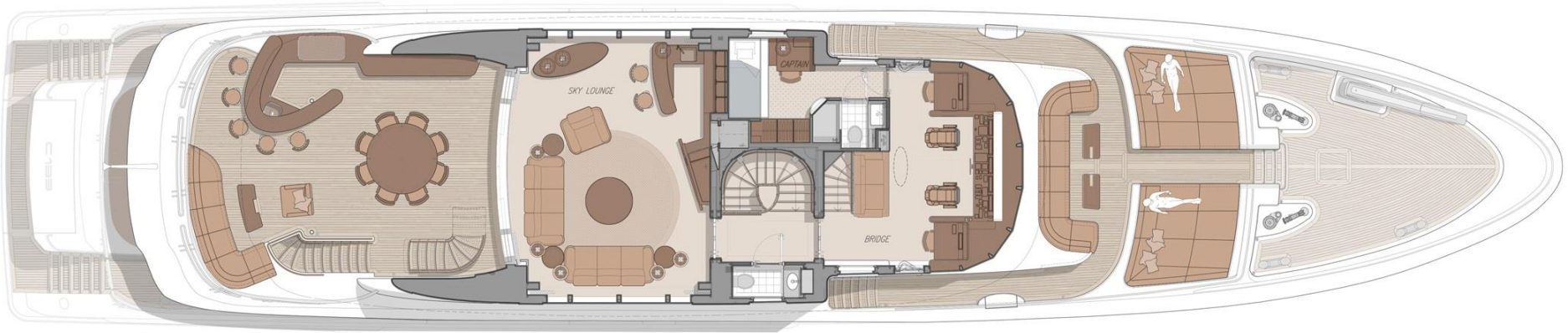


Builder	Conrad	Engine	2 x CAT 670 hp
Year of build	2018	Engine model	C18 ACERT
Length	40 m/131'3"	Fuel	Diesel
Beam	8.3 m/27'3"	Propulsion	2 prop shaft
Draft	2.65 m/8'3"	Gearbox	2 x ZF W650
Cabins	5 cabins for 10 guests	Stabilizers	CMC Electric zero speed
Hull material	Steel	Generators	2 x 99 kW CAT C4.4
Gross tonnage	394 t	Shore power	ASEA converter
Displacement	355 t	Bow thruster	Verhaar 95 kW
Exterior designer	Reymond Langton	Stern thruster	Verhaar 95 kW
Naval Architect	Diana Yacht Design	Watermaker	Sea Recovery
Interior Design	Conrad Shipyard	Air conditioner	Webasto
Speed	11/13 knots	Passerelle	Feebe
Range	4000 nm at 10.5 kn	Nav.equipment	Furuno/Sailor
Fuel capacity	48,600 l (12,838 US gall.)	Main tender	Castoldi JT16
Water capacity	10,500 l (2,773 US gall.)	Crew tender	Williams Turbojet 385
Fuel consumption	210 l/h at 10 kn.		

M/Y "VIATORIS"

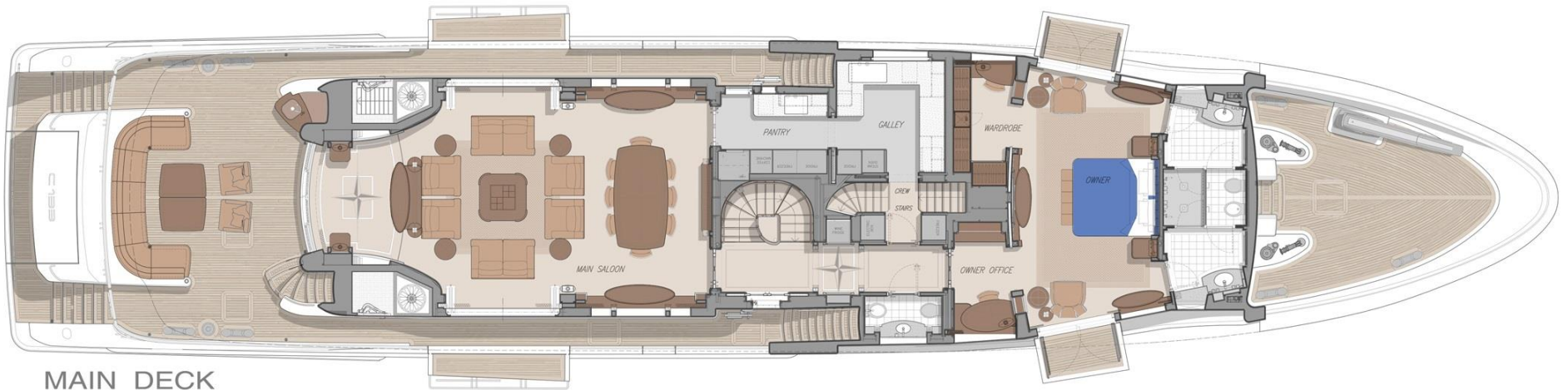


SUN DECK



BRIDGE DECK

M/Y "VIATORIS"



MAIN DECK
 (BALCONIES AND DOOR'S OPENED)



LOWER DECK (GUEST CABINS IN VIP CONFIGURATION)

M/Y "VIATORIS"



M/Y "VIATORIS"