



M/Y "ENDEAVOUR II"



MAIN CHARACTERISTICS

Builder	Rossinavi	Max speed	16 knots
Length	49.9 m	Year of built	2017
Beam	8.79 m	Cabins	5
Draft	2.0 m	Price	23,700,000 EUR

NAVIATOR GROUP
Anatoly Skippari
+358 40 50 20080
anatoly.naviator.fi



M/Y "ENDEAVOUR II"



M/Y "ENDEAVOUR II"



M/Y "ENDEAVOUR II"



M/Y "ENDEAVOUR II"



M/Y "ENDEAVOUR II"



M/Y "ENDEAVOUR II"



M/Y "ENDEAVOUR II"



M/Y "ENDEAVOUR II"



M/Y "ENDEAVOUR II"



M/Y "ENDEAVOUR II"



M/Y "ENDEAVOUR II"



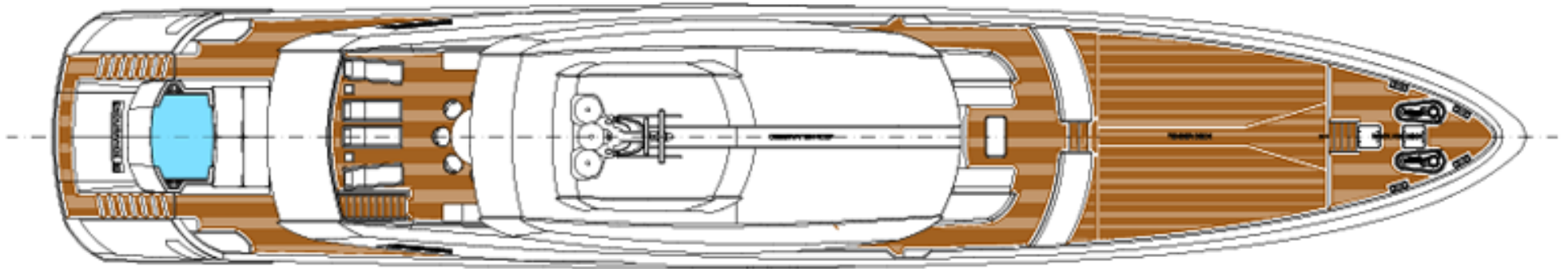
M/Y "ENDEAVOUR II"

SPECIFICATION

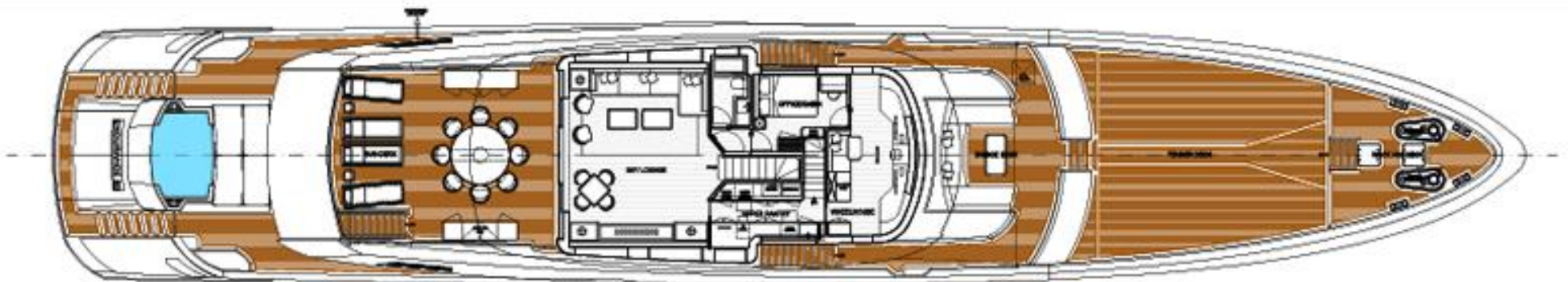
Builder	Rossinavi	Engines	2 x Caterpillar
Year of built	2017	Engine model	C32 Acert
Length	49.9 m/163'09"	Fuel	Diesel
Beam	8.79 m/28' 0"	Propulsion	2 Rolls Royce US105
Draft	2.0 m/6'0"	Stabilizer	2 x CMC Stabilis Electra 160, zero speed fin
Cabins	5 cabins for 10 guests	Generators	2 x 80 kW Caterpillar C4.4 Acert 80 kW Caterpillar C4.4
Hull material	Aluminum	Shore power	Eekels MPH150C2S2
Displacement	405 t	Bow thruster	CMC Dualis BTM160-EA 165 kW
Exterior Designer	Enrico Gobbi/Team 4 Design	Watermaker	3 x Idromar MC2J 3100 l/day
Naval Architect	Studio Arrabito	Air conditioner	VECO 720,000 BTU
Interior Designer	Achille Salvagni	Passerelle	Opacmare 6.5 m
Speed	12/16 knots	Tenders	7m Limousine tender 280 hp 6m Amphibious 115 hp and a Sea Legs 3 wheeled drive system for land use
Range	5000 n.m. at 12 kn.	Toys	2 x BRP Seadoo Spark SDS900iBR
Fuel capacity	76,400 l (20,182 US gall.)		
Water capacity	8,000 l (2,113 US gall.)		
Fuel consumption	160 l/h at 12 kn.		

M/Y "ENDEAVOUR II"

SUNDECK

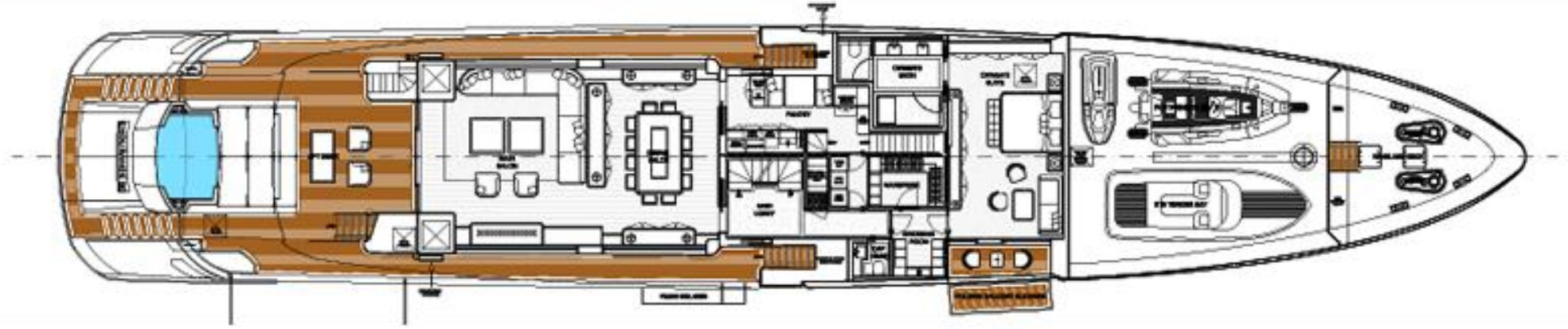


UPPER DECK

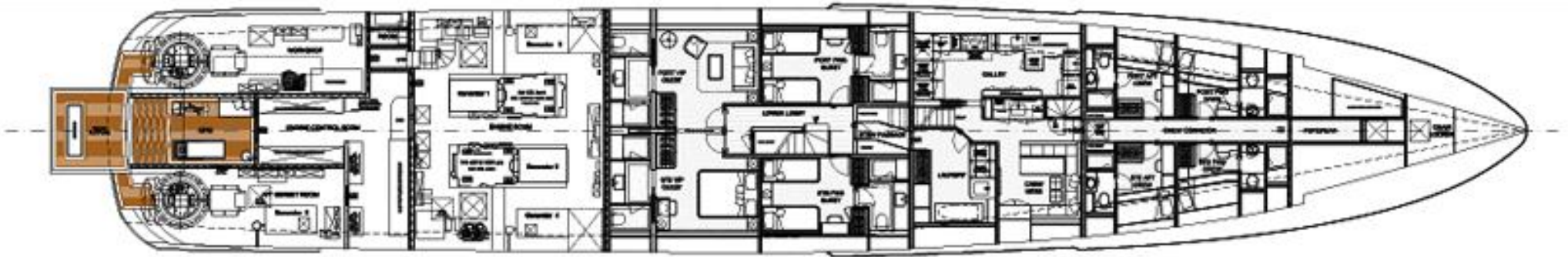


M/Y "ENDEAVOUR II"

MAIN DECK



LOWER DECK



M/Y "ENDEAVOUR II"