



***M/Y "CARYALI"***



## MAIN CHARACTERISTICS

Builder	Alloy Engineering & Marine	Max speed	15 knots
Length	41.15 m	Year of built	2013
Beam	8.89 m	Cabins	5
Draft	2.59 m	Price	<b>25,500,000 USD</b>

NAVIATOR GROUP  
Anatoly Skippari  
+358 40 50 20080  
anatoly.naviator.fi



***M/Y "CARYALI"***



***M/Y "CARYALI"***



***M/Y "CARYALI"***



***M/Y "CARYALI"***



***M/Y "CARYALI"***



***M/Y "CARYALI"***





***M/Y "CARYALI"***



***M/Y "CARYALI"***



***M/Y "CARYALI"***



***M/Y "CARYALI"***



***M/Y "CARYALI"***



***M/Y "CARYALI"***



***M/Y "CARYALI"***



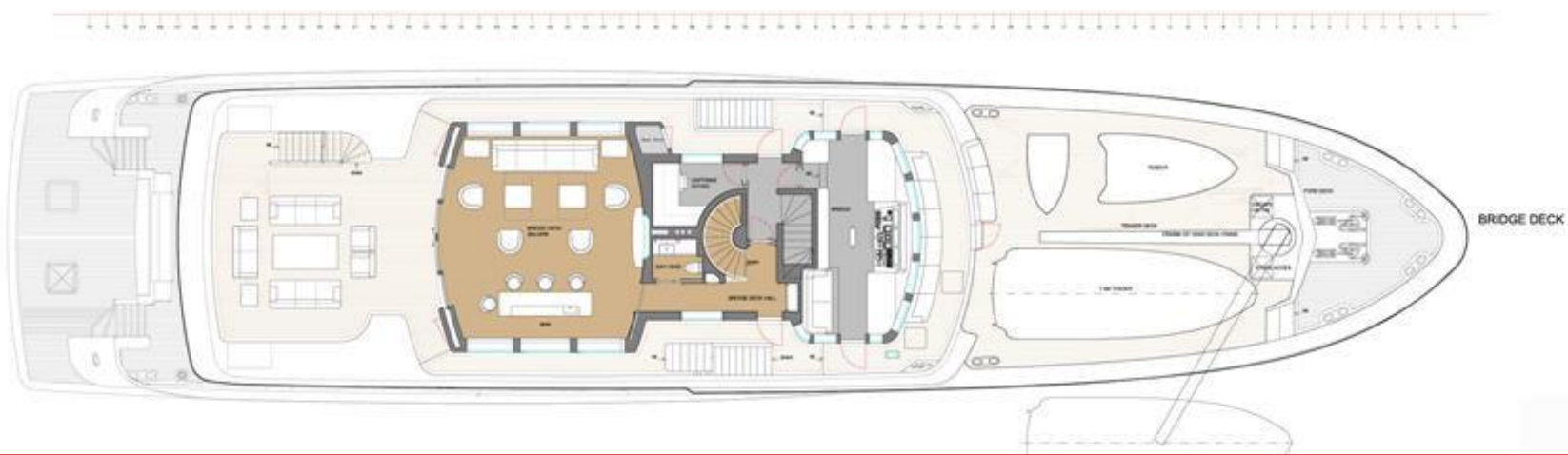
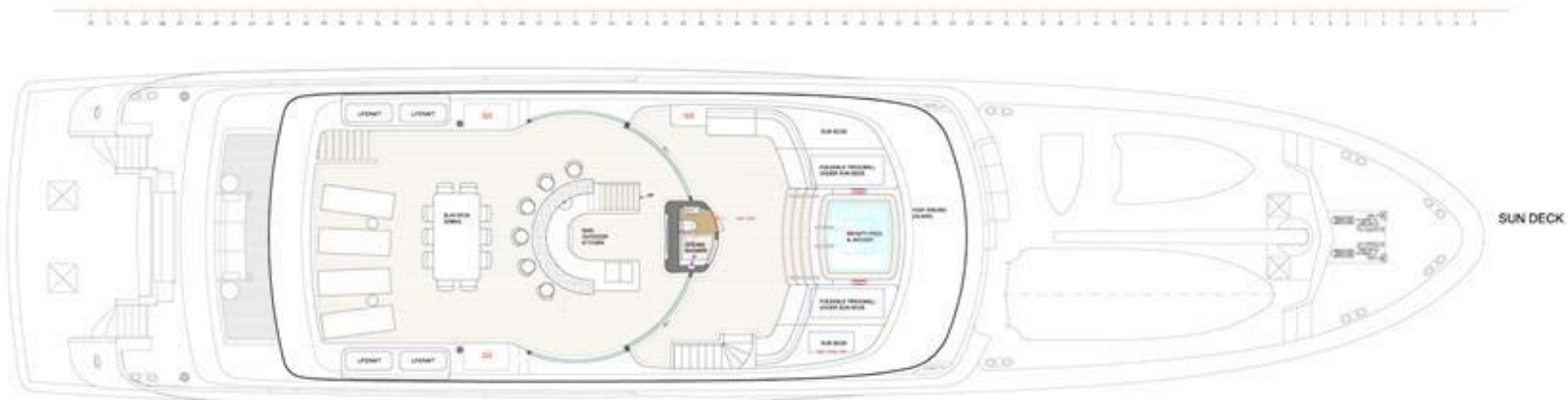
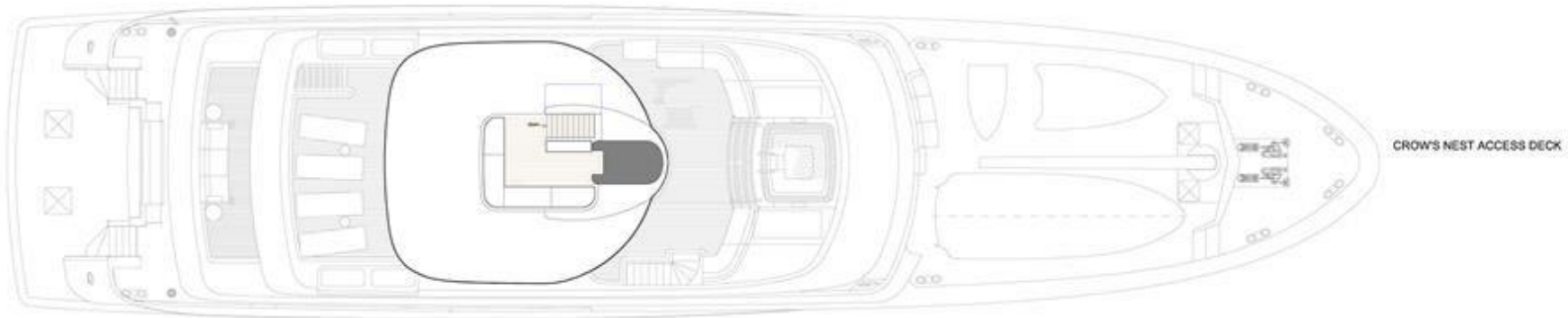
***M/Y "CARYALI"***



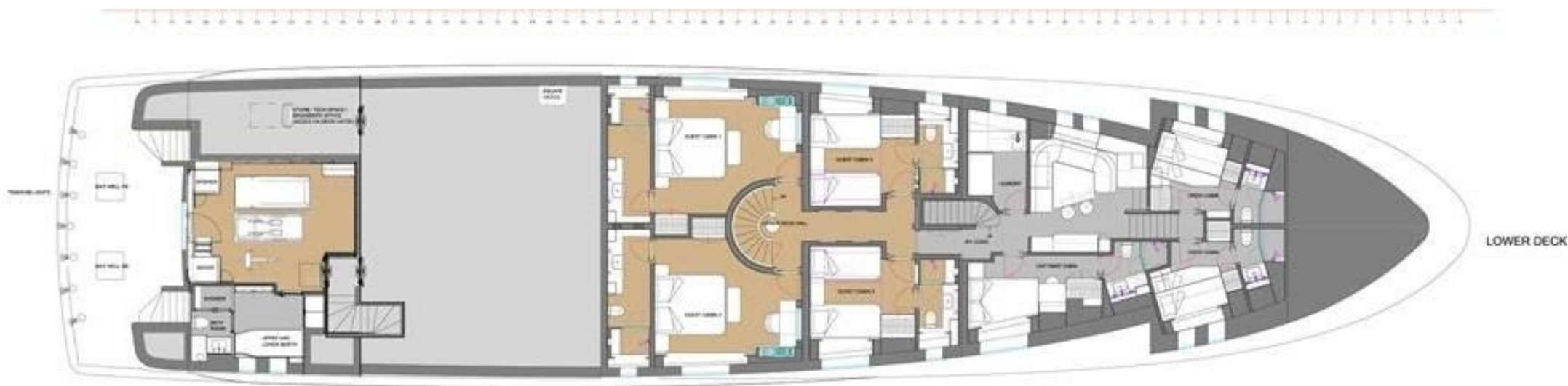
# SPECIFICATION

Builder	Alloy Engineering & Marine	Engines	2 x Caterpillar 1301 hp
Year of built	2013	Engine model	C32
Length	41.15 m/135'0"	Fuel	Diesel
Beam	8.89 m/29'2"	Propulsion	2 prop shaft
Draft	2.59 m/8'6"	Gearbox	ZF 3000
Cabins	5 cabins for 10 guests	Stabilizer	Quantum QC1500 zero speed
Hull material	Steel	Generators	2 x Caterpillar 7.1 118 kW
Displacement	440 t	Shore power	ASEA AC75V
Exterior Designer	Rene van der Velden	Bow/ Stern	
Naval Architect	Alloy Engineering & Marine	Thrusters	24/28 ABT Track (hydr.)
Interior Designer	CaryAli/ Redman Designs	Watermaker	2 x HEM series 25
Speed	12/15 knots	Air conditioner	Condaria with makeup air and reverse cycle
Range	5000 nm at 10 kn.	Passerelle	Alloy Yacht Custom Hydraulic
Fuel capacity	63,402 l (16,749 US gall.)	Tenders	Zodiac Hurricane 7.33 Zodiac FC 470
Water capacity	12,742 l (3,366 US gall.)	Jet ski	2 x Seabob F5S
Fuel consumption	115 l/h at 10 kn.		

**M/Y "CARYALI"**



# M/Y "CARYALI"



**M/Y "CARYALI"**



***M/Y "CARYALI"***