

PROJECT STARLIGHT

86m (282'2") Darnet Design 2023



DESIGN BY

Darnet Design

YEAR

2023

LOA

86m (282'2")

BEAM

12.9m (42'4"), 13.4m (44') Two platforms

DRAFT

3.5m (11'6")

GROSS TONNAGE

2,200 - 2,400

GUESTS

14 guests in 7 cabins

HULL MATERIAL

Steel (Aluminium superstructure)

SPEED

16 - 19 knots max

ASKING PRICE

POA













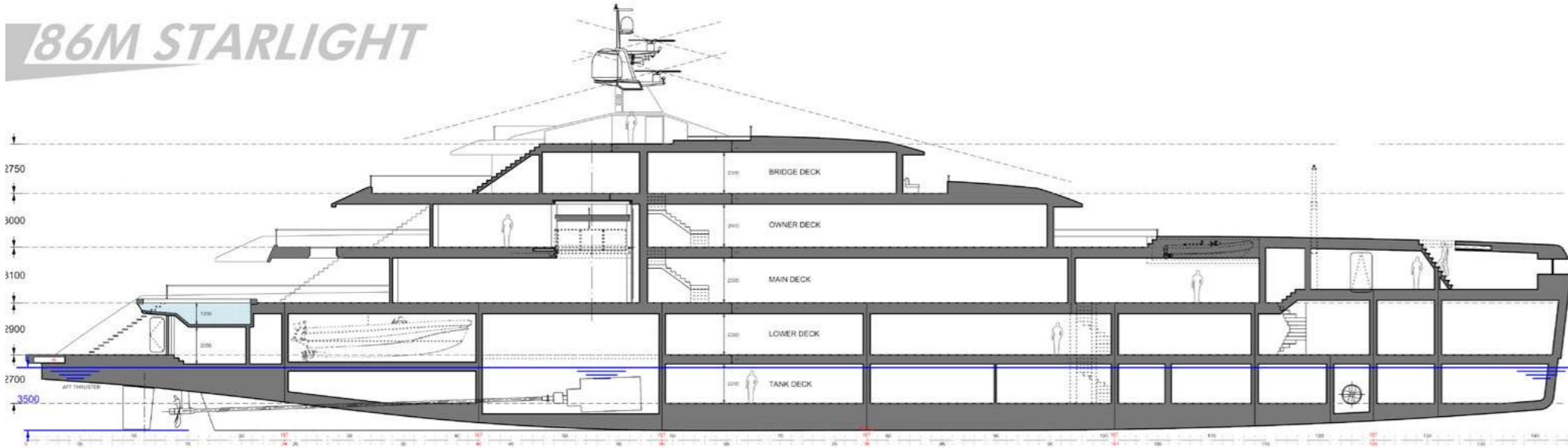




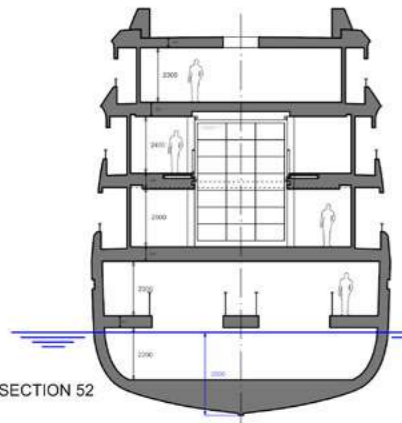




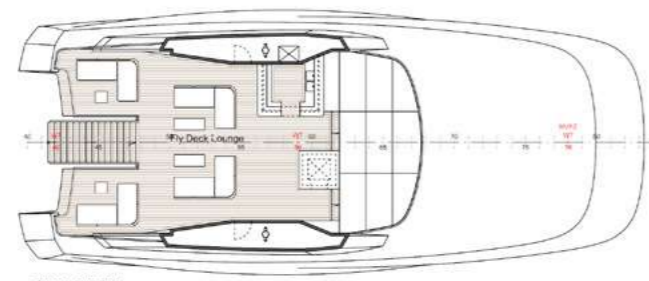
86M STARLIGHT



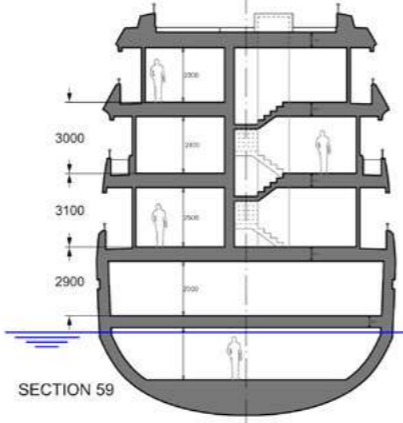
LONGITUDINAL SECTION



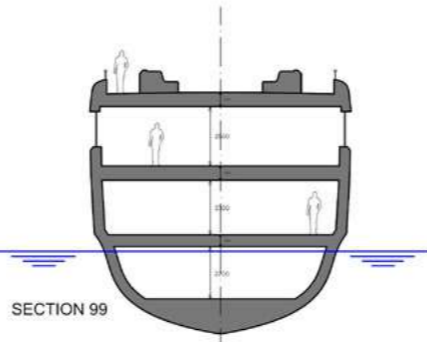
SECTION 52



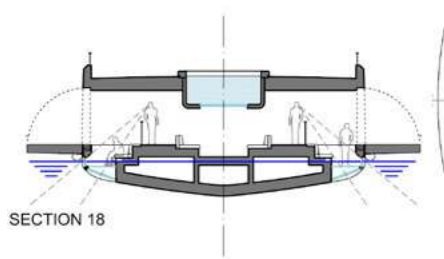
SUN DECK



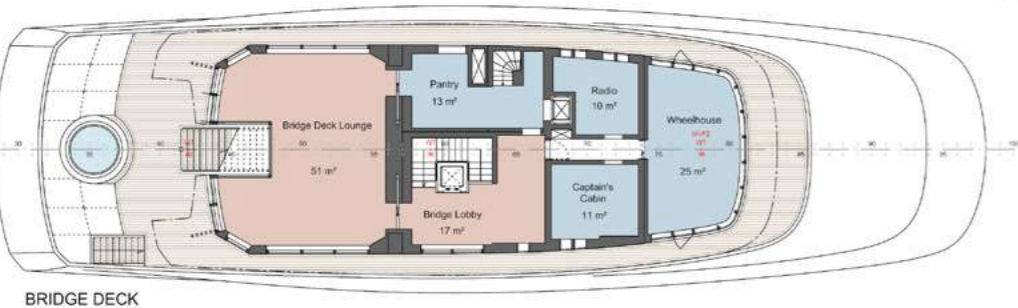
SECTION 59



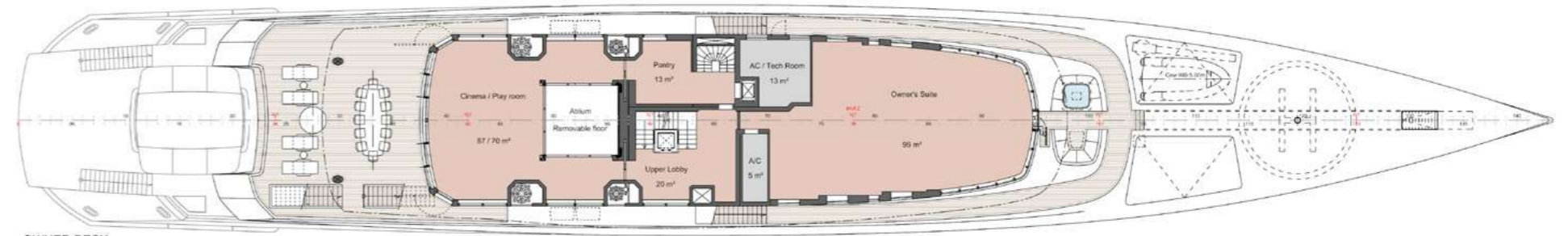
SECTION 99



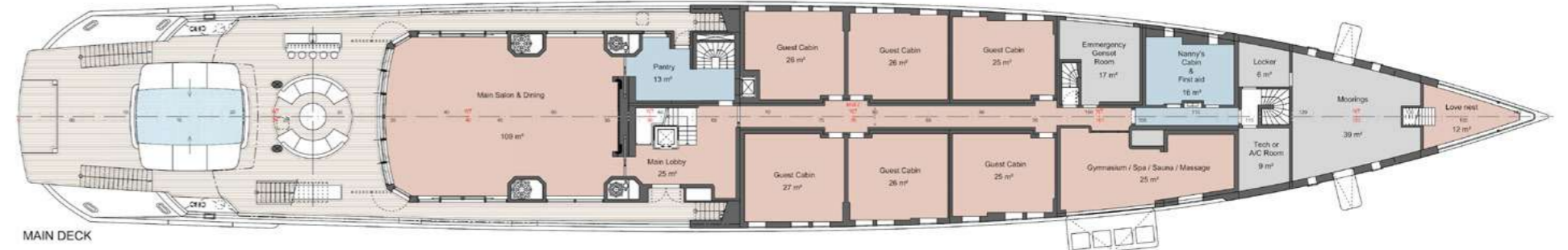
SECTION 18



BRIDGE DECK

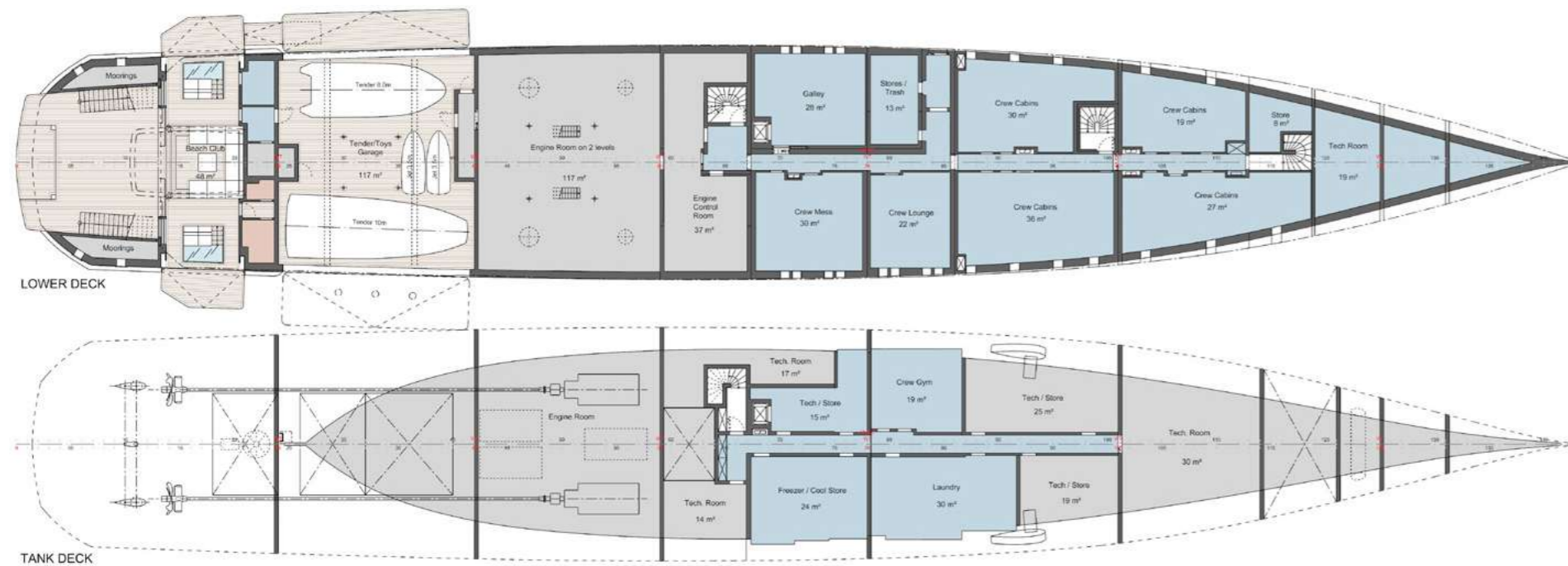


OWNER DECK



MAIN DECK

NEW-BUILDING PROJECT **86 M MOTOR YACHT** OUTLINE SPECIFICATION



VESSEL DESCRIPTION

Vessel typeMCA-LY3 compliant diesel-mechanic yacht
Hull formFast displacement mono-hull
Hull materialMarine grade steel
Superstructure materialMarine grade steel and aluminium alloy

PRINCIPAL PARTICULARS

Length, overall.....86.0 m (282 ft. 2 in.)
Beam, moulded12.9 m (42 ft. 4 in.)
Design draft.....3.5 m (11 ft. 6 in.)
Top speed.....19.0 knots
Cruising speed16.0 knots
Range @ 14 knots.....6,000 nm
Light-ship displacement.....1,500 tonnes
Gross tonnage.....2,200

CLASSIFICATION / REGISTRATION

Classification.....Lloyd's Register (LR)
RegistrationCayman Islands Shipping Registry (CISR)

COMPLEMENT

Passengers, max.....14 persons
Passengers.....12 persons (during charter operations)
Crew (incl. captain).....22 persons

